



Capital District Trails Plan

Advancing a Vision for Connecting Communities

STAKEHOLDER WORKSHOP



Stakeholder Workshop

Schenectady County



BEHAN PLANNING
AND DESIGN



ConsultEcon, Inc.





Capital District Trails Plan

Advancing a Vision for Connecting Communities

STAKEHOLDER WORKSHOP

WELCOME

Thank You For Attending Today



Capital District Transportation Committee

Behan Planning and Design
The Chazen Companies Engineering
Sidekick Creative
Consultecon, Inc.



AGENDA

Part I: Introduction

About the Capital District Trails Plan

2016 Trail Survey

New Online Survey

Online Wiki Trail-Maker

Regional Trail Name / Identity Options

Part II: Discussion Tables

Mapping Exercises

Next Steps



INTRO

What is the Capital District Trails Plan?

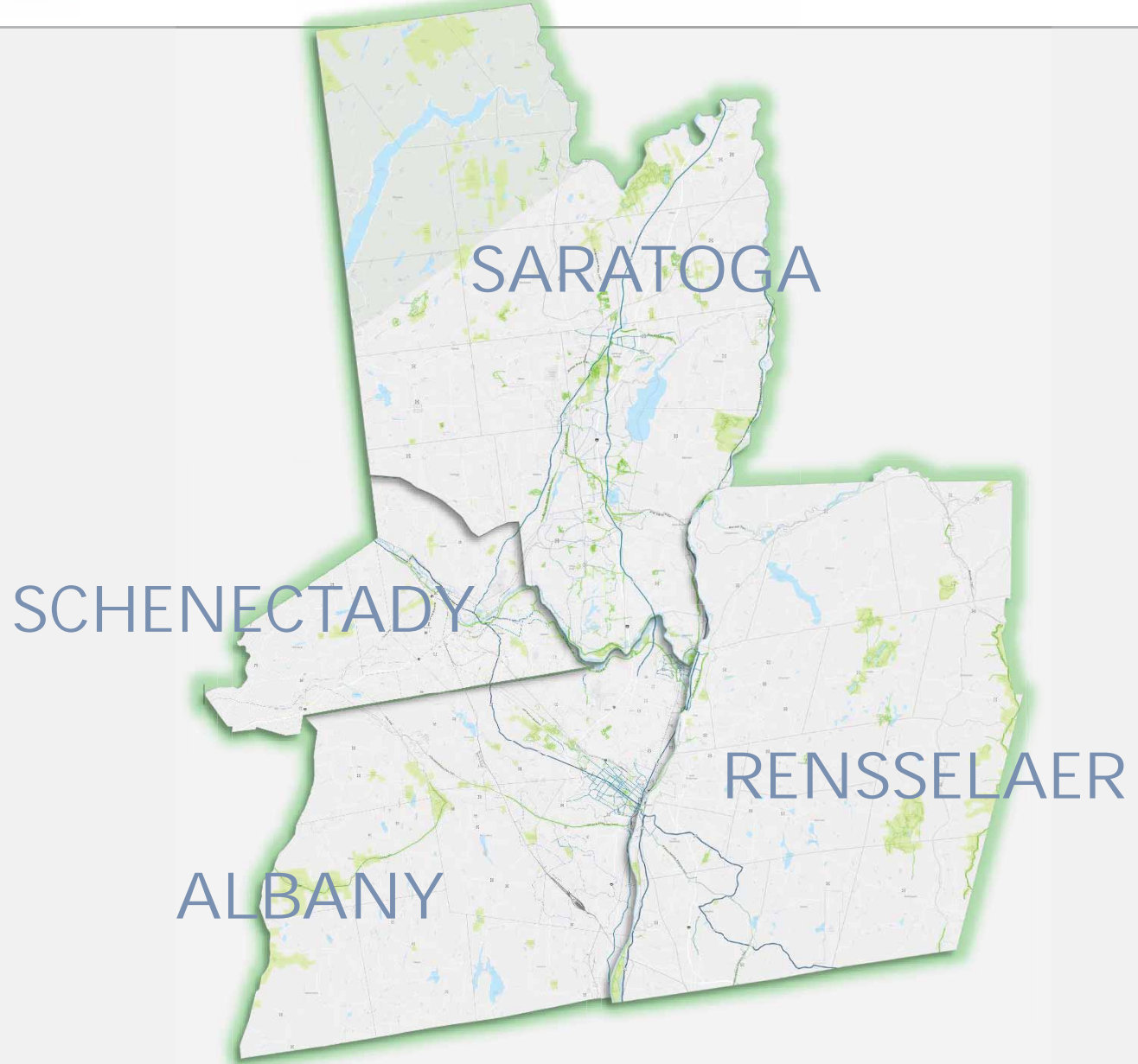
The *Capital District Trails Plan* is a strategy to link together the various multi-use paths in Albany, Schenectady, Rensselaer and Saratoga counties into a single connected network of trails for everyone in the region to enjoy.

This planning effort will identify existing trail locations throughout the region and work with local communities to envision potential new trail routes which will infill missing segments, connecting to each other and to key points of interest.





INTRO





INTRO

What is the Capital District Trails Plan?

Regional Trails Draft Vision Statement: The Capital Region communities shall be linked together by a system of shared-use paths that are separated from roadways for use by bicyclists, pedestrians and other similar users. This dedicated transportation system allows a large number of users with a wide range of abilities to go from place to place safely and efficiently with reduced potential for conflicts with motor vehicles.

Recognizing that this vision is only partly complete at this time, it will continue to be necessary for the trail system to at times include on-road bike lanes where necessary.

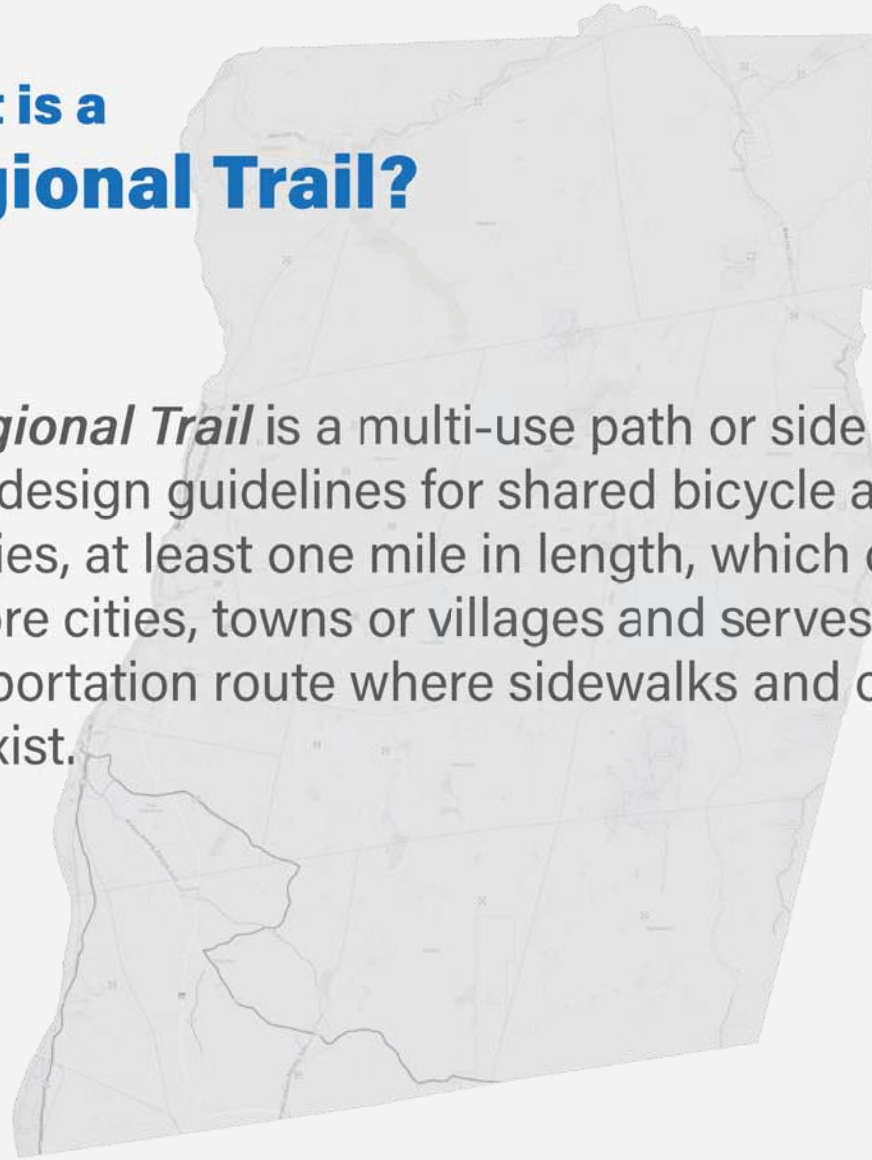




INTRO

What is a Regional Trail?

A Regional Trail is a multi-use path or side path that meets state design guidelines for shared bicycle and pedestrian facilities, at least one mile in length, which connects with two or more cities, towns or villages and serves as an alternative transportation route where sidewalks and other facilities may not exist.





INTRO

OFF-ROAD MULTI USE PATHS



IRON TRUSS BRIDGE
BUILT 1888 IN BERLIN, CT. METAL
LENTICULAR TRUSS DESIGN.
ORIGINALLY OVER BLACK CREEK
IN CAMBRIDGE, NY. MOVED TO MALTA
2001 TO REPLACE STONE BRIDGE.
DESIGNATED A MALTA LANDMARK 2008

OFF-ROAD MULTI USE PATHS



OFF-ROAD

OFF-ROAD MULTI USE PATHS



INTRO

NEAR ROAD MULTI USE PATHS



NEAR ROAD MULTI USE PATHS



INTRO

ON ROAD BIKE LANE



SCHEDULE

Project Schedule

- ✓ Kickoff / Initiation (December 2017)
- ✓ Public Workshop – Saratoga County (February 14)
- ✓ Public Workshop – Rensselaer County (February 16)
- ✓ Public Workshop – Albany County (February 27)
- Public Workshop – Schenectady County (March 9)**





NEXT STEPS

What are the Next Steps?



Combine Stakeholder Input. Combine the best ideas from the stakeholder meetings to identify new proposed trail routes for the four-county area.

Economic Analysis. Develop estimates of increased business growth and other benefits from the trail system.

Trail Management Best Practices. Develop case studies from the region on successful trail development and management.

Branding and Marketing. Develop a regional trail branding identity and marketing plan.

Draft Vision Plan. Combine the above findings into a new Vision Plan for the regional trail system.



NEXT STEPS

What are the Next Steps?

Combine Stakeholder Input. Combine the best ideas from the stakeholder meetings to identify new proposed trail routes for the four-county area.



Economic Analysis. Develop estimates of increased business growth and other benefits from the trail system.

Trail Management Best Practices. Develop case studies from the region on successful trail development and management.

Branding and Marketing. Develop a regional trail branding identity and marketing plan.

Draft Vision Plan. Combine the above findings into a new Vision Plan for the regional trail system.



NEXT STEPS

What are the Next Steps?

Combine Stakeholder Input. Combine the best ideas from the stakeholder meetings to identify new proposed trail routes for the four-county area.

Economic Analysis. Develop estimates of increased business growth and other benefits from the trail system.



Trail Management Best Practices. Develop case studies from the region on successful trail development and management.

Branding and Marketing. Develop a regional trail branding identity and marketing plan.

Draft Vision Plan. Combine the above findings into a new Vision Plan for the regional trail system.



NEXT STEPS

What are the Next Steps?

Combine Stakeholder Input. Combine the best ideas from the stakeholder meetings to identify new proposed trail routes for the four-county area.

Economic Analysis. Develop estimates of increased business growth and other benefits from the trail system.

Trail Management Best Practices. Develop case studies from the region on successful trail development and management.



Branding and Marketing. Develop a regional trail branding identity and marketing plan.

Draft Vision Plan. Combine the above findings into a new Vision Plan for the regional trail system.



NEXT STEPS

What are the Next Steps?

Combine Stakeholder Input. Combine the best ideas from the stakeholder meetings to identify new proposed trail routes for the four-county area.

Economic Analysis. Develop estimates of increased business growth and other benefits from the trail system.

Trail Management Best Practices. Develop case studies from the region on successful trail development and management.

Branding and Marketing. Develop a regional trail branding identity and marketing plan.



Draft Vision Plan. Combine the above findings into a new Vision Plan for the regional trail system.



NEXT STEPS

What are the Next Steps?



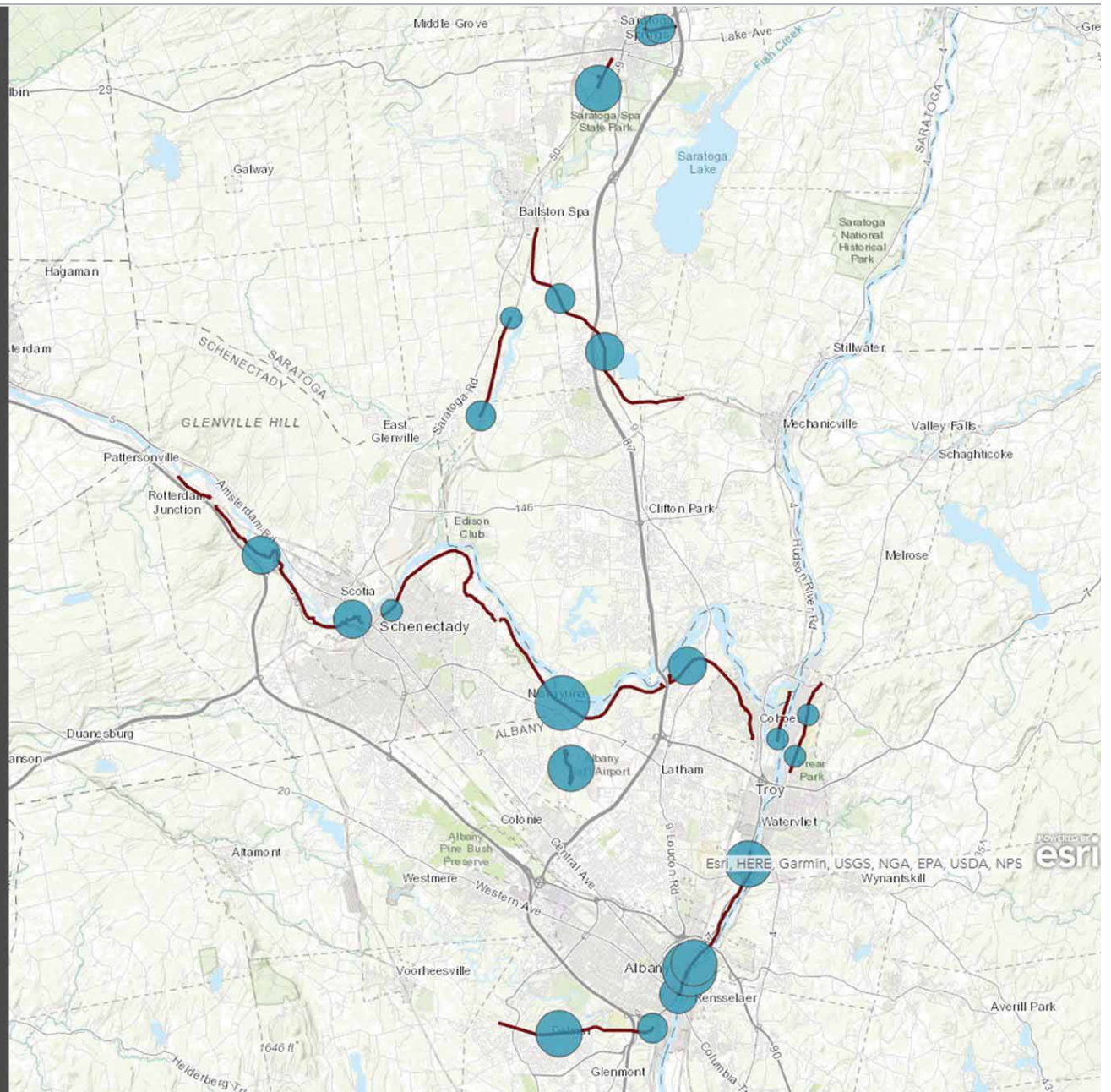
Once the draft plan has been developed, we expect to present the findings and recommendations as part of a Regional Trails Summit.



2016 SURVEY

Trail Count Location & Usage

-  > 199,999 to 264,000
-  > 99,999 to 199,999
-  > 74,999 to 99,999
-  > 49,999 to 74,999
-  20,000 to 49,999





Key Findings



Visitors

Estimated 1.6 million trail visitors annually.



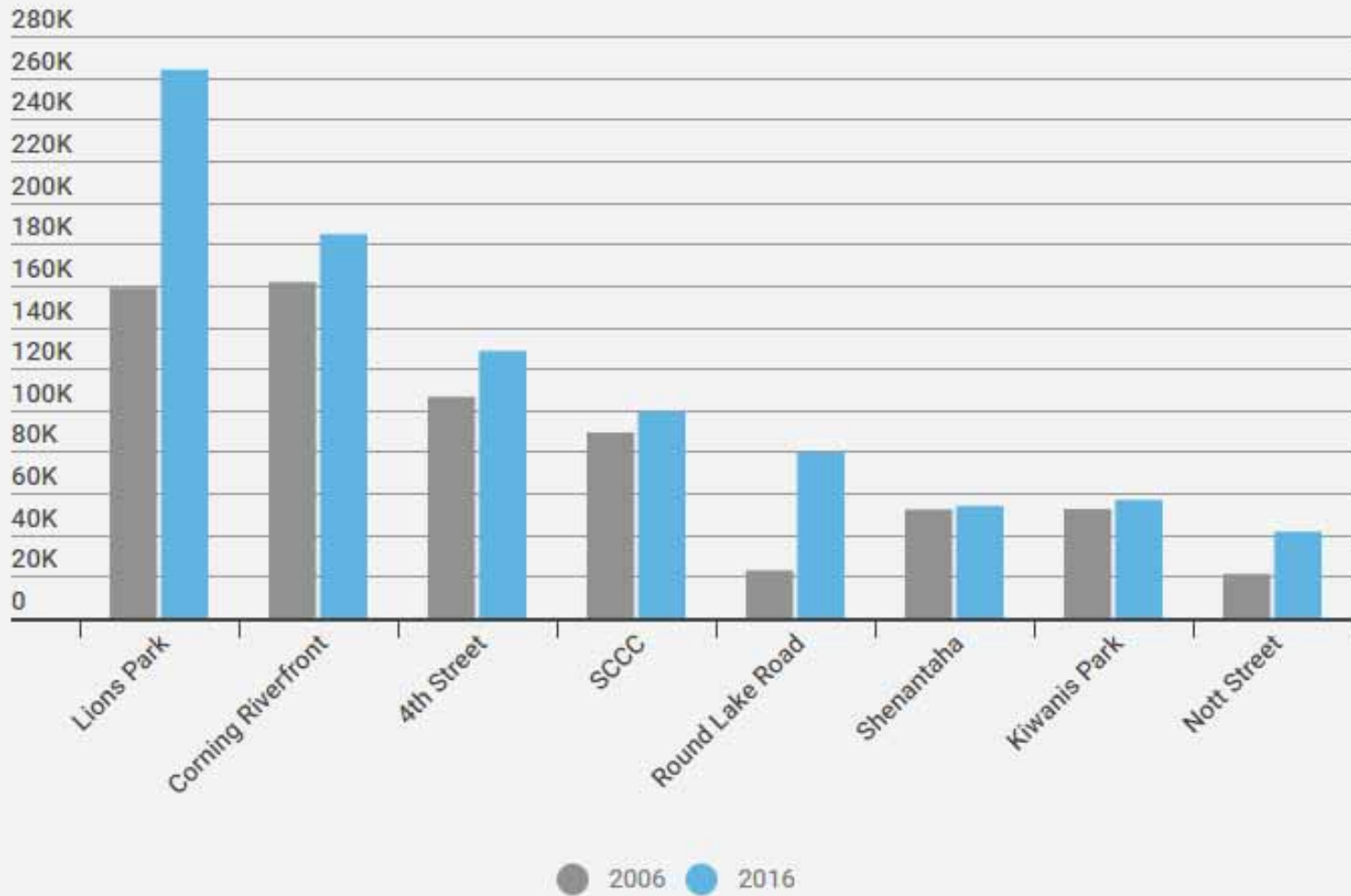
Increased Visits

Total trail visits were up by 24% since 2006.



2016 SURVEY

Key Findings





Key Findings

Over 60% of trail visits were to Capital District's primary trails:

1. **Zim Smith**
2. **Uncle Sam**
3. **Mohawk-Hudson**

Majority (99%) of users believe that multi-use trails have a positive impact on the quality of life in the Capital District.



Key Findings

Strong Support: Majority of those polled felt that trail building and maintenance is a good use of public funds.

- **Trail Users** (100%)
- **Adjacent Homeowners** (79%)

Neighborhood Benefit: More than half of the adjacent property owners felt that having a trail near their property improved their physical activity level and use it frequently.



Capital District Trails Plan

Advancing a Vision for Connecting Communities

STAKEHOLDER WORKSHOP

www.cdtcmpo.org/trails

WEBSITE

Capital District Trails Plan
Advancing a Vision for Connecting Communities

HOME NEWS GET INVOLVED! TRAILS INFO FAQ / ABOUT

Get Involved!
#518Trails

CLICK TO TAKE THE SURVEY



www.cdtcmpo.org/trails

WEBSITE

Capital District Trails Plan
Advancing a Vision for Connecting Communities

HOME NEWS GET INVOLVED! TRAILS INFO FAQ / ABOUT

Links

Get Involved!
#518Trails

CLICK TO TAKE THE SURVEY



www.cdtcmpo.org/trails

WEBSITE

The screenshot shows the homepage of the Capital District Trails Plan website. At the top left is the logo and name: "Capital District Trails Plan" with the tagline "Advancing a Vision for Connecting Communities". To the right is a navigation menu with links for "HOME", "NEWS", "GET INVOLVED!", "TRAILS INFO", and "FAQ / ABOUT". The main content area features a large photograph of three people walking on a paved trail through a wooded area with autumn foliage. A green and yellow graphic overlay at the bottom of the photo contains the text "Get Involved!" and "#518Trails". Below the photo is a white banner with the word "Survey" in red, a large grey arrow pointing right, and a button that says "CLICK TO TAKE THE SURVEY".



SURVEY



Capital District Trails Plan - Survey

A Survey for Future Regional Trails in Albany, Schenectady, Rensselaer & Saratoga Counties



Thank you for participating in this questionnaire! Your input will be used to help guide the planning for a growing network of Regional Trails (multi-use paths) for the Capital Region counties of Albany, Rensselaer, Saratoga and Schenectady.



Capital Region Trails Plan
Advancing a vision
for connecting communities

Use the "Routes" and "Points" selection below to tell us where we may be missing trails and/or where you would like to see trails in the future.

Existing Conditions

- Existing Trail - Off-road
- Existing Trail - On-road
- Planned Trail - Off-road
- Planned Trail - On-road
- Trail Concept - Off-road
- Trail Concept - On-road

Public Input

- Routes**
- Existing Trail - Missing
 - Planned Trail - Missing
 - Trail Concept
- Points**
- Destination in Need of Trail
 - Barrier to Trail Development



CDTC - Regional Trails Plan

About & Help

Routes

Points

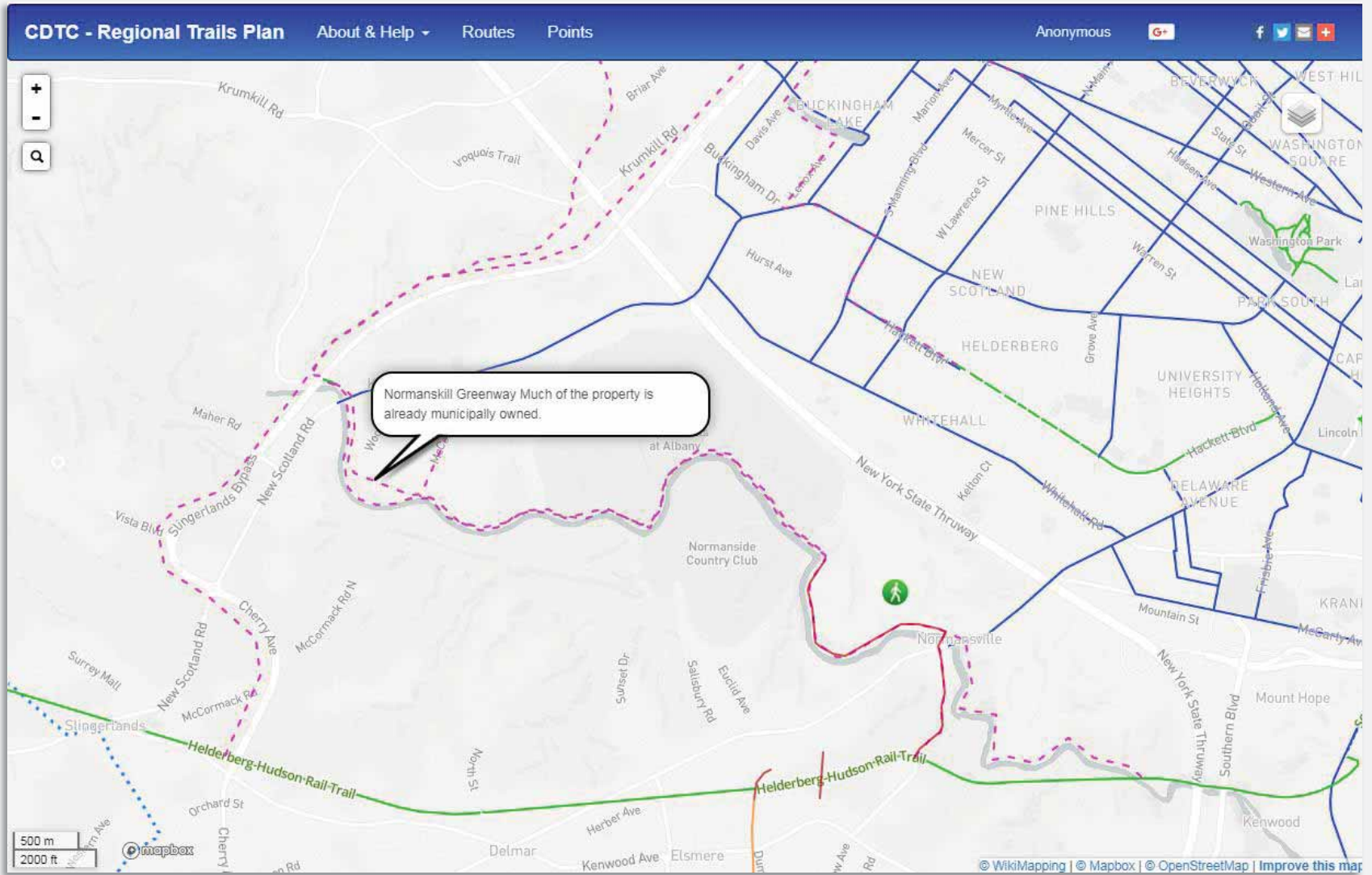
Anonymous



WIKIMAP



WIKIMAP





IDENTITY

What should the Regional Trail Identity Be?

The online survey includes a few example names which are in consideration for the regional trail system.

Today, we would like to get your thoughts on these names, with additional graphics/branding options for consideration.

What do you think would be the best identity for a Capital District Regional Trail System?



What should the Regional Trail Identity Be?

1



2



3



4



5





MAPPING

Mapping Table Discussions



MAPPING



Legend



- Existing Trail - Separated
- Planned Trail - Separated
- Trail Concept - Separated
- Existing Trail - On-Road
- Planned Trail - On-Road
- Trail Concept - On-Road
- State Bike Routes
- Existing Rail Lines
- Parkland
- Municipal Boundary
- Surface Water



MAPPING



Legend









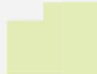


- Existing Trail - Separated
- Planned Trail - Separated
- Trail Concept - Separated
- Existing Trail - On-Road
- Planned Trail - On-Road
- Trail Concept - On-Road
- State Bike Routes
- Existing Rail Lines
- Parkland
- Municipal Boundary
- Surface Water



MAPPING



Legend

-  Existing Trail - Separated
-  Planned Trail - Separated
-  Trail Concept - Separated
-  Existing Trail - On-Road
-  Planned Trail - On-Road
-  Trail Concept - On-Road
-  State Bike Routes
-  Existing Rail Lines
-  Parkland
-  Municipal Boundary
-  Surface Water





MAPPING



Legend

Existing Trail - Separated

Planned Trail - Separated

Trail Concept - Separated

Existing Trail - On-Road

Planned Trail - On-Road

Trail Concept - On-Road

State Bike Routes

Existing Rail Lines

Parkland

Municipal Boundary

Surface Water



MAPPING

Let's Get Started

1. *Where Do We Want To Connect To?*
2. *How Do We Make Those Connections?*



NEXT STEPS

**Thank You
For Attending!**

Help Spread The Word! Share the news about this effort with your friends and neighbors.

www.cdtcmpo.org/trails

#518Trails



Capital District Trails Plan

Advancing a Vision for Connecting Communities

STAKEHOLDER WORKSHOP

Thank you



BEHAN PLANNING
AND DESIGN

112 Spring Street, Suite 305
Saratoga Springs, NY 12866

151 South Main Street, Suite 200
New City, NY 10956

www.behanplanning.com